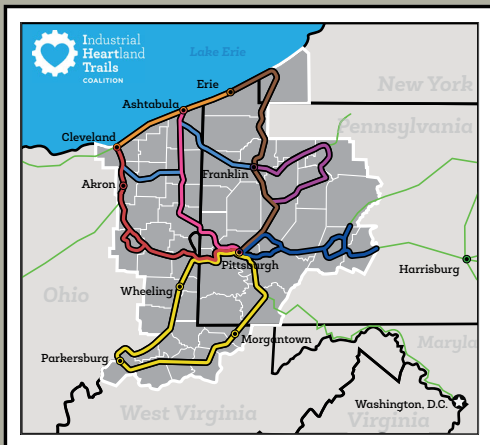


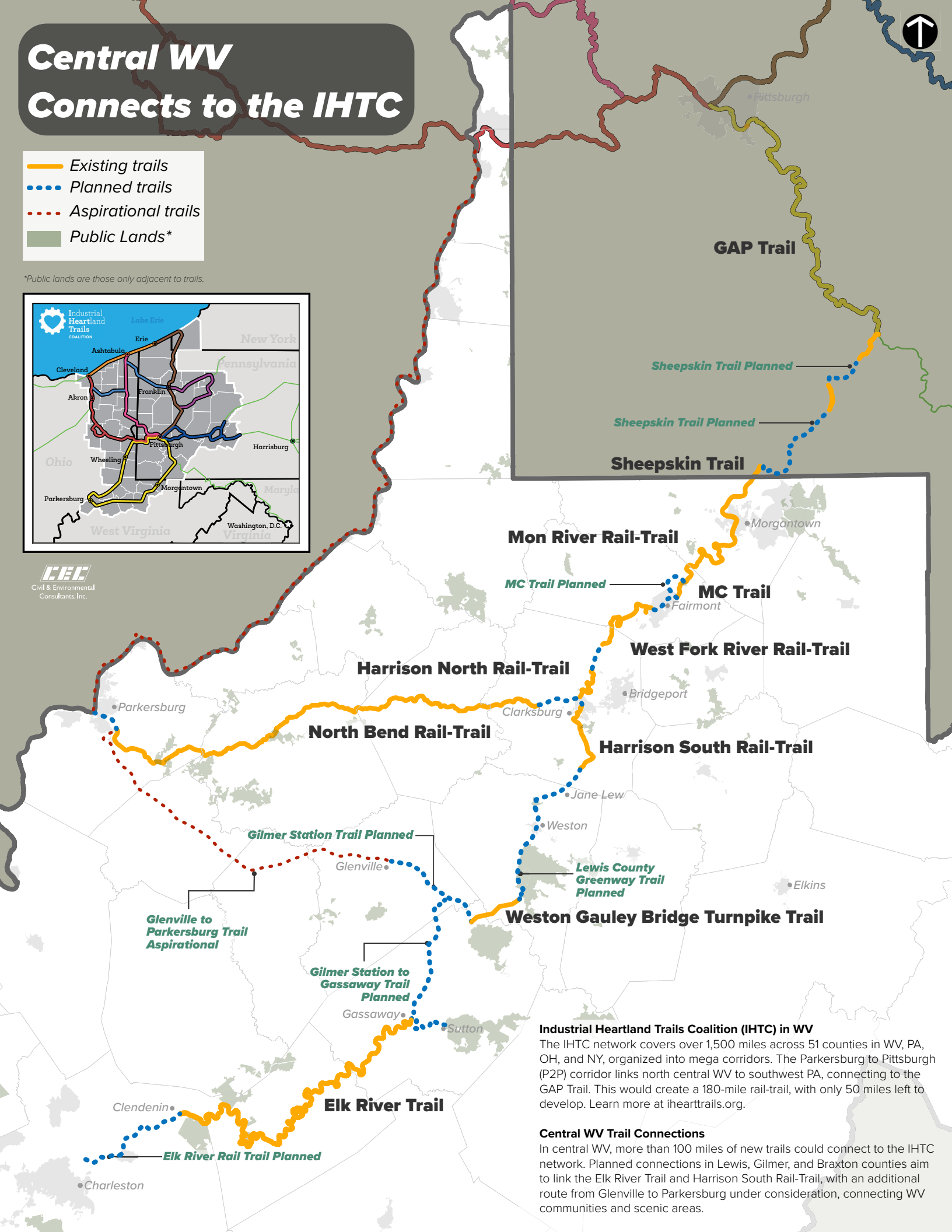
# Central WV Connects to the IHTC

- Existing trails
- ... Planned trails
- ... Aspirational trails
- Public Lands\*

\*Public lands are those only adjacent to trails.



**CEC**  
Civil & Environmental  
Consultants, Inc.



**Industrial Heartland Trails Coalition (IHTC) in WV**  
The IHTC network covers over 1,500 miles across 51 counties in WV, PA, OH, and NY, organized into mega corridors. The Parkersburg to Pittsburgh (P2P) corridor links north central WV to southwest PA, connecting to the GAP Trail. This would create a 180-mile rail-trail, with only 50 miles left to develop. Learn more at [iheartrails.org](http://iheartrails.org).

**Central WV Trail Connections**  
In central WV, more than 100 miles of new trails could connect to the IHTC network. Planned connections in Lewis, Gilmer, and Braxton counties aim to link the Elk River Trail and Harrison South Rail-Trail, with an additional route from Glenville to Parkersburg under consideration, connecting WV communities and scenic areas.